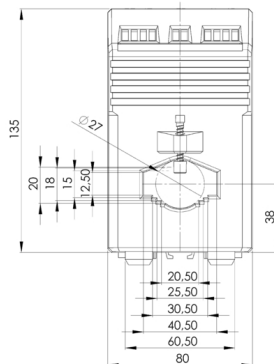


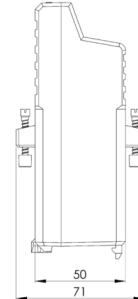
SWMU 41.51/41.52 - 4-20mA or 0-10V - $U_h=230VAC$



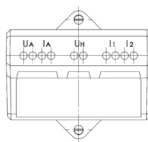
PB_SWMU41.5_online-zoom.jpg



TZ_SWMU41.5_F_online-zoom.jpg



TZ_SWMU41.5_S_online-zoom.jpg



TZ_SWMU41.5_T_online-zoom.jpg

Description

Measuring transducers for the transformation of sinus-shaped AC current. For an output signal a load-independent DC current and an imprinted DC voltage signal is available, which stands proportionally to the measurement value of the input volume. These signals can be used for display, recording, monitoring and or control function.

Simultaneously, the secondary current of the current transformer can be utilised to operate conventional needle instruments.

The measuring transducer fulfils the requirements and regulations with regard to the electromagnetic compatibility (EMV) and security IEC 1010 and EN 61010.

- Bus bar: 40 x 12 mm
- Round conductor: 27 mm
- Width: 80 mm
- Height: 135 mm
- Depth: 71 mm
- Weight: 350 g
- operating range: 0 ... 120 % I_N

Versions

order no.	description	primary current	output	aux. supply
7000062006	SWMU 41.52	1A	4-20mA or 0-10V	230VAC
7000062007	SWMU 41.52	5A	4-20mA or 0-10V	230VAC
7000062008	SWMU 41.52	10A	4-20mA or 0-10V	230VAC
7000062009	SWMU 41.51	15A	4-20mA or 0-10V	230VAC
7000062010	SWMU 41.51	20A	4-20mA or 0-10V	230VAC

7000062011	SWMU 41.51	25A	4-20mA or 0-10V	230VAC
7000062012	SWMU 41.51	30A	4-20mA or 0-10V	230VAC
7000062013	SWMU 41.51	40A	4-20mA or 0-10V	230VAC
7000062014	SWMU 41.51	50A	4-20mA or 0-10V	230VAC
7000062015	SWMU 41.51	60A	4-20mA or 0-10V	230VAC
7000062016	SWMU 41.51	75A	4-20mA or 0-10V	230VAC
7000062017	SWMU 41.51	100A	4-20mA or 0-10V	230VAC
7000062018	SWMU 41.51	150A	4-20mA or 0-10V	230VAC
7000062019	SWMU 41.51	200A	4-20mA or 0-10V	230VAC
7000062020	SWMU 41.51	250A	4-20mA or 0-10V	230VAC
7000062021	SWMU 41.51	300A	4-20mA or 0-10V	230VAC
7000062022	SWMU 41.51	400A	4-20mA or 0-10V	230VAC
7000062023	SWMU 41.51	500A	4-20mA or 0-10V	230VAC
7000062024	SWMU 41.51	600A	4-20mA or 0-10V	230VAC
7000062025	SWMU 41.51	750A	4-20mA or 0-10V	230VAC
7000062026	SWMU 41.51	800A	4-20mA or 0-10V	230VAC