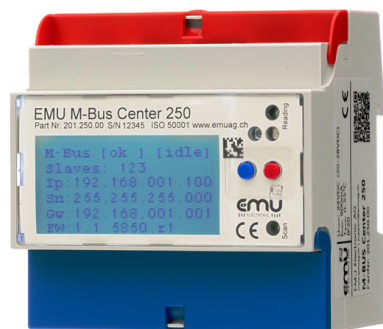
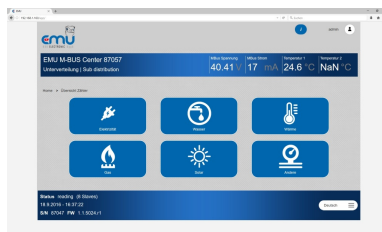


EMU M-Bus Center - Data Logger



EMU M-Bus Center.jpg



Datenlogger_Screenshot.jpg



Datenlogger_Screenshot2.jpg

Description

The EMU M-Bus Center can be used as a data collector for up to 250 M-Bus measuring devices: Electricity, water, heat, gas, fuel, tech. Liquids.

Data output via Ethernet connection in BACnet IP, OPC UA, FTPS, (s)FTP, LAN, json, csv. The device has BBMD functionality (BACnet Broadcast Management).

The EMU M-Bus Center enables very simple & efficient commissioning thanks to

- Ultra-fast meter search via primary or secondary address
- installation templates
- Integrated web server

An integrated high-performance level converter allows direct access to the M-Bus network from the office or on site via laptop.

By using the EMU M-Bus Center, costs can be saved since components such as Gateway M-Bus to BACnet IP, Gateway M-Bus to OPC UA and a high performance level converter are already integrated in the M-Bus Center.

The device has automatic data storage in the event of a server connection failure.

It is ready for the IoT and for Industry 4.0. Configurations, desired updates and backups can be done via the integrated web server.